



 Jan Forster



- Semi-Detached House
- Fully Refurbished
- Stunning Kitchen-Diner
- Great Location
- Transport Links
- Immaculately Presented
- Four Bedrooms
- Driveway
- Local Facilities
- Council Tax Band: C





Jan Forster Estates are delighted to welcome to the market this immaculately presented, semi-detached house on Malvern Road in North Shields. The property, which also benefits from no upper chain, has been tastefully extended and offers generous, versatile living space.

The accommodation briefly comprises: welcoming entrance hallway with handy understairs storage, bright and airy lounge, and a magnificent kitchen-diner finished to a very high standard with an extensive range of wall and base units, integrated appliances, quality work surfaces, breakfasting bar and a spacious dining area with floor-to-ceiling windows that flood the room with natural light. A practical utility room provides additional space for laundry and storage, complemented by a convenient ground floor WC, as well as a good-sized bedroom, which benefits from its own modern WC- perfect for guests. Off the landing to the first floor, you are presented with three well-proportioned bedrooms and a stunning family bathroom WC, beautifully finished with modern fixtures and fittings.

Externally, the front of the property features a low-maintenance lawn garden, complemented by a convenient driveway for off-street parking. To the rear, you can find a charming enclosed garden, which features both lawn and patio areas- perfect for alfresco dining, summer barbecues, or relaxed entertaining with family and friends.

Positioned in a peaceful yet central area, the property is just moments away from a wide range of local amenities including shops, supermarkets, and restaurants. It is also within easy reach of North Tyneside General Hospital. The location offers excellent transport links, with the A19, Tyne Tunnel, and A1058 Coast Road all easily accessible, providing direct routes to Newcastle city centre and the beautiful coastline. The area is also well-served by reputable schools, making it an attractive choice for young families.

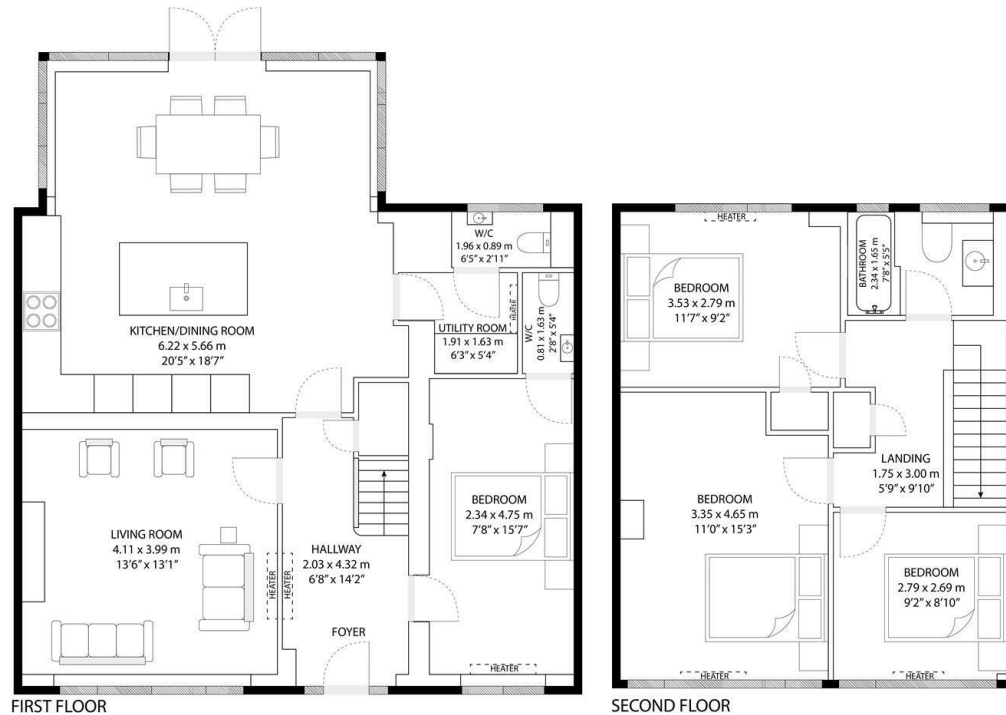
To book a viewing, please call our sales team on 0191 236 2070.



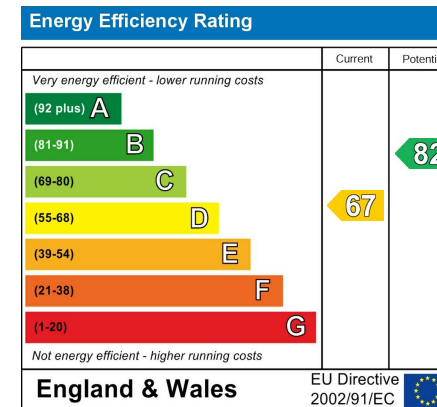
Tour <https://my.matterport.com/show/?m=PkHtb6vcxCh>

Tenure: Freehold

Council Tax Band: C



106 Malvern Road, England, NE29 9ES
 TOTAL APPROX. FLOOR AREA 128 SQ.M - 1,376 SQ.FT
 Whilst every attempt has been made to ensure the accuracy of the floor plan contained here, measurements of doors, windows, rooms and any other items are approximate and no responsibility is taken for any error, omission, or misstatement. This plan is for illustrative purposes only and should be used as such by any prospective purchaser.



The difference between house and home

You may download, store and use the material for your own personal use and research. You may not republish, retransmit, redistribute or otherwise make the material available to any party or make the same available on any website, online service or bulletin board of your own or of any other party or make the same available in hard copy or in any other media without the website owner's express prior written consent. The website owner's copyright must remain on all reproductions of material taken from this website.



www.janforsterestates.com

Gosforth
High Heaton
Tynemouth
Property Management Centre

0191 236 2070
0191 270 1122
0191 257 2000
0191 236 2680

